

**Early Morning Update:**

The Apr18 natural gas contract is trading up \$0.01 at \$2.69. The Apr18 crude contract is up \$0.56 at \$64.10.

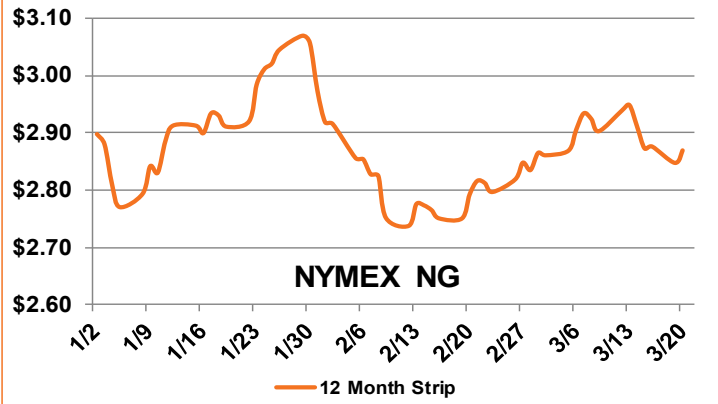
**Summary:** The fourth Nor'easter this month, Winter Storm Toby, has brought snow and lower temperatures resulting in increased heating demand across the eastern U.S. Higher demand prompted the April 2018 NYMEX NG contract to gain back a modest 2.4 cents yesterday to settle at \$2.675/MMBtu. Temperatures for the country's highest heating demand centers in the Midwest and East Coast are expected to remain colder-than-normal into this weekend, and, according to current forecasts, will not be relieved until mid-week next week. The winter storm swept across the Ohio Valley yesterday and into the Appalachians and Mid-Atlantic Coast late last night, dumping 6-12 inches of snow. Snowfall is expected in New York City and southern New England, as well, but should dissipate by late Thursday afternoon. Storm winds could bring power outages, though none have been reported yet. Increased heating-related demand in late-March will produce higher withdrawals from natural gas storage for the remainder of the withdrawal season, which technically ends at the end of March.

**Bullish Factors**

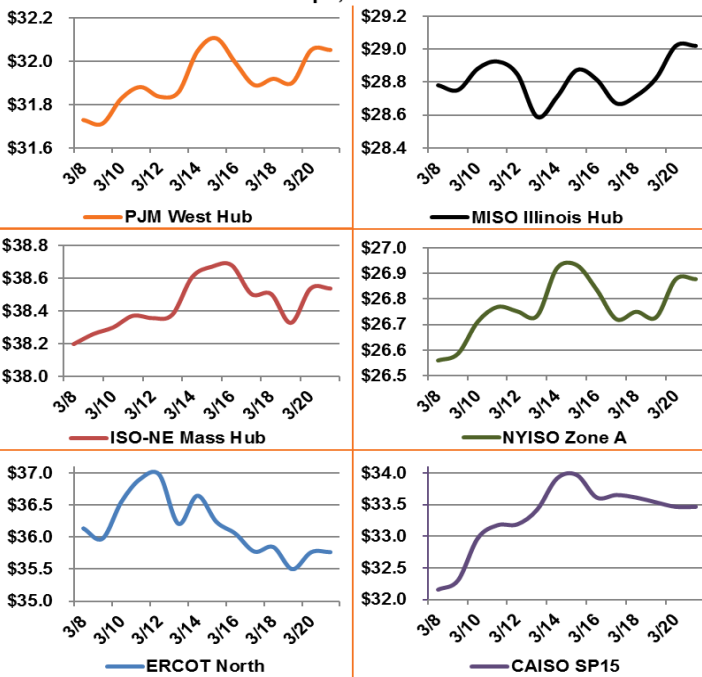
- Low expected storage levels
- LNG exports ramping up
- Exports to Mexico at all-time high

**Bearish Factors**

- NG production at record levels
- Growing renewable energy generation
- Increasing normal temperatures



**12 Month Strips, ATC Power Prices**

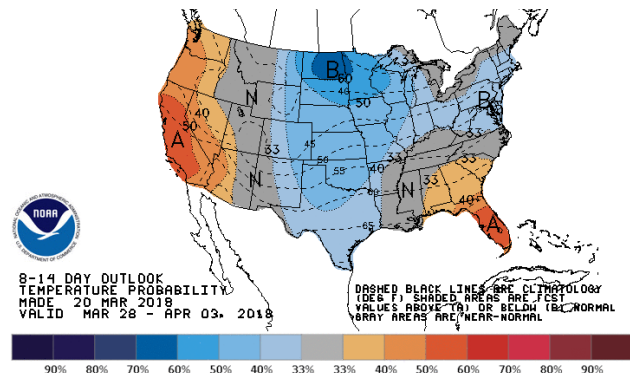
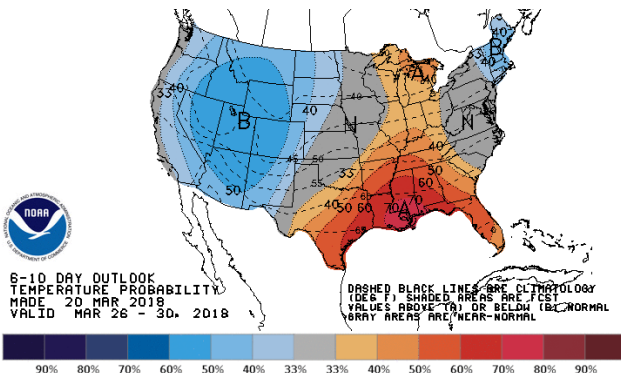


**Next Day On-Peak Power (traded for 3/21/2018)**

<b>ISO-NE Mass Hub</b> \$46.91	<b>MISO Indiana Hub</b> \$36.00	<b>NYISO Zone G</b> \$33.75
<b>PJM West Hub</b> \$51.86	<b>ERCOT North</b> \$22.66	<b>CAISO SP15</b> \$38.67
<b>NYMEX NG</b>	<b>Close</b>	<b>Change</b>
Apr-18	2.675	0.024
May-18	2.704	0.026
12 Month	2.869	0.022
Cal 19	2.807	0.009
Cal 20	2.758	0.002

**EIA Natural Gas Storage**

<b>EIA Reported Storage (Bcf)</b>	<b>This Week</b>	<b>Last Week</b>	<b>Last Year</b>	<b>5-Year Avg.</b>
<b>Total</b>	1,532	1,625	2,250	1,828
<b>Diff v. Current</b>		-93	-718	-296
<b>% Diff</b>			-31.9%	-16.2%



This document is for informational purposes only. All the information provided is "as is" and is not intended for trading purposes or advice. Direct Energy makes no representations or warranties, express or implied, as to the quality, accuracy, completeness, or reliability of the information provided in this newsletter. Further, Direct Energy is not liable for any informational errors or incompleteness or for any actions taken in reliance on information contained herein. Direct Energy® and the Energy Bolt design are registered trademarks of Direct Energy Marketing Limited.